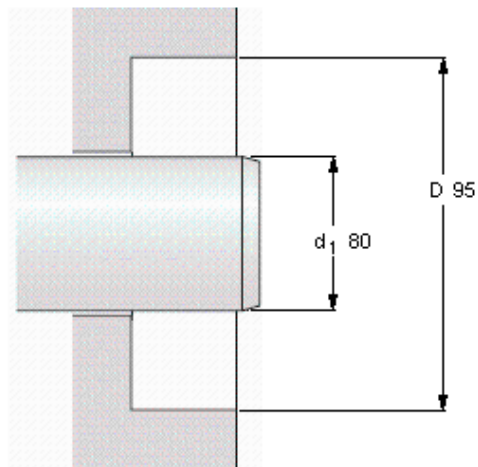
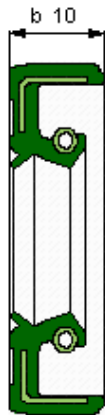


| Základní rozměry |        |                         | Konstrukce | Materiál jazýčku | Označení           | skladové číslo pro USA |
|------------------|--------|-------------------------|------------|------------------|--------------------|------------------------|
| Hřídel           | Vrtání | Jmenovitá šířka těsnění |            |                  |                    |                        |
| d1               |        | b                       |            |                  |                    |                        |
| mm               |        |                         | -          | -                | -                  | -                      |
| <b>80</b>        | 95     | 10                      | HMSA10     | RG               | 80X95X10 HMSA10 RG | 563733                 |



**Permissible operating temperature [°C / °F]**

|           |               |
|-----------|---------------|
| min       | max           |
| -40 / -40 | 100 / 212     |
|           | short periods |
|           | 120 / 248     |

**Rotational speed [r/min]**

|  |
|--|
| 2387   |
| <b>at circumferential speed [m/s / ft/s]</b> |
| 10 / 32,8                                    |

**Pressure differential [MPa / psi]**

0,03 / 4,35

See also "Permissible speeds" and "Chemical and thermal resistance"